



DBArtisan

Cross-platform Database Administration

Embarcadero® DBArtisan®, the leading cross-platform database administration tool, helps DBAs maximize the availability, performance, and security of their databases. Comprehensive graphical editors and wizards boosts productivity, streamline routine tasks and reduce errors so DBAs can manage larger, more complex databases. With advanced space, capacity, and performance management capabilities, DBAs can easily detect storage-related bottlenecks, track storage and growth over time, and pinpoint performance problems. DBArtisan's consistent and unified support for all major database platforms (IBM® DB2® for LUW, DB2 for z/OS®, and DB2 for OS/390; Microsoft® SQL Server; Oracle®; and Sybase®) allows organizations to standardize on one solution for database administration.

- Boost productivity, lower costs, and simplify database administration
- Increase availability, performance, and security
- Be prepared with advanced performance, space, capacity, and backup and recovery tools

BOOST PRODUCTIVITY, LOWER COSTS, AND SIMPLIFY DATABASE ADMINISTRATION

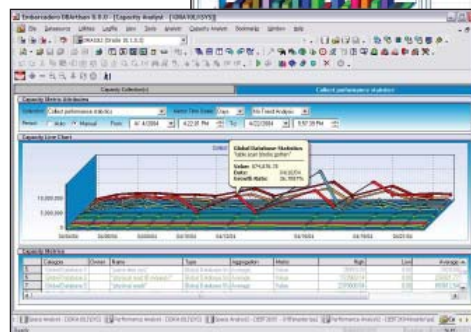
By providing a common, easy-to-use interface for all major DBMS platforms, DBArtisan boosts productivity, lowers costs, and simplifies database administration in complex environments. DBArtisan automates and streamlines the day-to-day tasks of DBAs by providing a rich, intuitive feature set including utilities for schema, SQL, job, and data management. It enables DBAs to concurrently manage multiple databases from a single interface, creating dramatic productivity gains for both experienced and novice database professionals.



Above: With the ability to display data in both text and graphical form, DBArtisan gives DBAs the information they need in the format they want.

INCREASE AVAILABILITY, PERFORMANCE, AND SECURITY

DBArtisan provides numerous methods to help you optimize the performance of your key databases. With powerful database monitors, intelligent diagnostic information, and strong drill-down details, you can quickly get to the heart of any performance degradation and take the necessary steps to fix it. DBArtisan also offers additional functionality to analyze, debug, and optimize your SQL for maximum code efficiency.



Left: Graphically chart the growth of your database over time to easily spot trends that might lead to database performance problems.

DBArtisan will also help you effectively establish and maintain database security throughout your environment. Powerful functionality allows DBAs to manage users, roles, privileges and password security, and migrate accounts between the same or different database platforms. And because DBArtisan manages database security across platforms, you can take a consistent, simplified approach to security even in the most complex environments.

BE PREPARED WITH ADVANCED PERFORMANCE, SPACE, CAPACITY, AND BACKUP AND RECOVERY TOOLS

Planning for the future of your databases is a critical task. Embarcadero Performance, Space, and Capacity Analysts make it easy to understand where your databases are today and where they are heading in the future, as well as establish proper backup and recovery plans. By enabling a proactive approach, DBArtisan helps organizations improve uptime, quality of service, resource allocation, and avoid costly mishaps.

Related Products

Rapid SQL®

Write high-performance, quality SQL in an integrated cross-platform database development environment.

Embarcadero Change Manager™

A complete set of schema, data and configuration tools to manage the database change management lifecycle.

Embarcadero Schema Examiner™

Validate and fine-tune database schema with comprehensive diagnostics and reporting.

Embarcadero DSAuditor™

Monitor database access and activity for higher security and better performance.

Standard Edition Solution Pack

Purchase DBArtisan with Rapid SQL and ER/Studio® to simplify mission-critical database development, design, and administration.

Feature	Description
Cross-platform Productivity	
Cross-platform Support	Supports all major DBMSs from a single console
Intuitive Interface	Streamlines and automates common and repetitive tasks with an easy-to-use GUI and powerful wizards
Job Management	Integrates with Microsoft Windows Task Scheduler

Schema Management	
Object Management	Creates, drops, or alters a wide variety of database objects
Graphical Object Editors	Moves effortlessly among disparate database schemas using standardized, multi-tabbed editors for each database object type
Cross-platform Schema Knowledge	Translates DBA skills across multiple platforms by leveraging full knowledge of the underlying DBMS system catalog, syntax, and alteration rules

SQL Management	
ISQL Facility	Allows users to create, save, and execute all SQL code against databases with ease
SQL Analysis	Provides built-in explain and performance execution analysis
Query Builder	Constructs even the most complicated SQL statements with point-and-click ease

Data Management	
Visual Data Editor	Adds, changes, and deletes data from database tables with all referential integrity being enforced
Data Migration	Migrates schema objects and associated table data using wizard-driven utilities

Performance Management	
Proactive Diagnostics	Provides detailed metrics and identifies performance, capacity planning, and storage management issues before they become major problems
Process Monitor	Monitors who is connected to your database along with each session's current activity and other session-related data

Security Management	
User Management	Manages users, logins, profiles, groups, aliases, and password security
Role Management	Grants and revokes roles to users and to other roles, as well as system- and object-level privileges
Account Migration	Migrates accounts between the same or different database platforms

Security Design and Assessment	
Data Classification	Categorizes and labels data and objects according to the level of security and privacy that should be applied to that information
Permission Management	Enables users, roles, and permissions modeling at the logical and physical level

Advanced Product Editions

DBArtisan Professional	
SQL Profiler	Captures metrics of various PL/SQL programmable objects on Oracle 8.1.5 and higher. SQL Profiler can be purchased separately as a module for Rapid SQL or DBArtisan. Available for Oracle only.
SQL Debugger	Debugs programmable objects such as stored procedures, functions, packages, and triggers. SQL Debugger can be purchased separately as a module for Rapid SQL or DBArtisan. Available for Oracle, DB2 for LUW, Sybase, and SQL Server.

DBArtisan Workbench	
Space Analyst	Provides analysis of database space information to pinpoint space-related exceptions and provides assistance in diagnosing and reorganizing storage inefficiencies using an intelligent reorganization wizard.
Performance Analyst	Provides intelligent analysis of real-time database and OS performance diagnostic information to troubleshoot and remedy performance problems.
Capacity Analyst	Collects and stores key database metadata and performance metrics and performs trend analysis to forecast database growth and usage.
Backup Analyst	High-performance backup and recovery engine containing powerful compression capabilities and built-in encryption features. Available for SQL Server only.

DBMS Support

DBArtisan supports the following DBMS versions running on UNIX®, Linux®, and Windows NT®-based servers.

DBArtisan supports the following DBMS versions:

- IBM DB2 for LUW 8.x and 9.x
- IBM DB2 for OS/390 and z/OS® 8.x and 9.x
- Microsoft SQL Server 2000 and 2005 (All editions including 2000 SDE and 2005 Express Edition) for 32-bit x86 and 64-bit Itanium & x86-64
- MySQL 4.x
- Oracle 8i, 9i, and 10g
- Sybase ASE 12.5 - 15.x

Embarcadero Performance, Space, and Capacity Analysts (included in **DBArtisan Workbench**) support:

- IBM DB2 for LUW 8.x and 9.x
- Microsoft SQL Server 2000 and 2005 (All editions including 2000 MSDE and 2005 Express Edition) for 32-bit x86 and 64-bit Itanium & x86-64
- Oracle 8i, 9i, 10g, and 11g
- Sybase ASE 12.5 - 15.x

Embarcadero Backup Analyst supports:

- Microsoft SQL Server 2000, 2005 (32-bit architecture)

Note: Embarcadero Backup Analyst is a separately licensed add-on to DBArtisan, DBArtisan Professional, and DBArtisan Workbench.

Download a Free Trial at www.embarcadero.com

Corporate Headquarters | Embarcadero Technologies | 100 California Street, 12th Floor | San Francisco, CA 94111 | www.embarcadero.com | sales@embarcadero.com